



Energy
SAVERS
LOW-H₂O



jaga



TEMPO WALL MOUNTED
The most powerful heat emitters for
condensing boilers and heat pumps

WWW.JAGA-USA.COM
WWW.JAGA-CANADA.COM





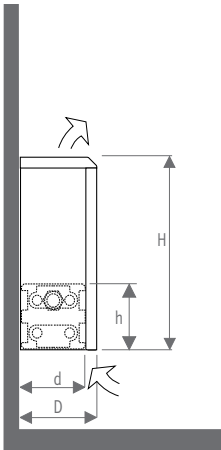
TEMPO
wall mounted cabinet



WARM POWER, BASIC STYLE

Tempo is a pioneer when it comes to energy saving. A classic, but most certainly not old-fashioned. Its horizontally lined front panel continues to be contemporary and universal. Tempo is light, fast, accurate and can be perfectly regulated. Its familiar look makes it a welcome addition to any interior.

DIMENSIONS



Tempo Wall Mounted is available in lengths from 15.5" (40) to 118" (300).

OUTPUT

Type	d	h	D	H 8 (20)	12 (30)	15.5 (40)	19.5 (50)	23.5 (60)	27.5 (70)	35.5 (90)
10	4 (10)	4 (10)	4 41/64 (11.8)	736	927	1080	1207	1311	1398	1532
11	4 (10)	8 (20)	4 41/64 (11.8)	---	1261	1422	1559	1680	1788	1977
15	6 (15)	4 (10)	6 39/64 (16.8)	1224	1525	1758	1943	2090	2207	2370
16	6 (15)	8 (20)	6 39/64 (16.8)	---	1666	1914	2138	2348	2546	2926
20	8 (20)	4 (10)	8 37/64 (21.8)	1720	2139	2463	2718	2921	3081	3305
21	8 (20)	8 (20)	8 37/64 (21.8)	---	2194	2563	2911	3251	3585	4259

Average output in BTU/h foot with 65°F (18.3°C) entering air and 1 GPM flow rate. Mean water temperature of 160°F (71.1°C).

THE MOST POWERFUL HEAT EMITTERS



Significant energy savings

The most efficient and modern fin tube element, that complies with actual AND future building standards and technologies.

For all low temperature hydronic systems

Perfectly suited for condensing boilers, heat pumps and solar systems.

The perfect partner for radiant heating

for improved temperature control and energy efficiency.

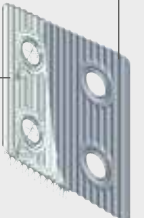
1/8" NPTF airvent connection

Brass collectors with 1/2" NPTF connections

With dirt-repellent and dust-proof lacquer in graphite grey

Up to 16 parallel copper tubes for the best heat emission

55 Corrugated aluminum fins per foot for super heat-output at low water temperatures



Note: dimensions in "()" are shown in centimeters.

